



AGENCJA

REZERW MATERIAŁOWYCH

MATERIAL RESERVES AGENCY

Nowy Świat 6/12, 00-400 Warszawa

www.arm.gov.pl

POLISH STOCKPILING SYSTEM



North Atlantic Ocean

North Sea

Bay of Biscay

Mediterranean Sea

Scale 1:19,500,000

Hebrides
Orkney Islands
Aberdeen
Edinburgh
Newcastle
Belfast
Ireland
Dublin
Irish Sea
Isle of Man (U.K.)
Liverpool
Cardiff
United Kingdom

Amsterdam
Netherlands
Brussels
Belgium
Luxembourg
LUX.
Strasbourg
Paris
France
Nantes
Loire
Bordeaux
Geneva
Lyon
Bern
Switzerland
Liechtenstein
LIECH.

Denmark
Copenhagen
Hamburg
Hannover
Bonn
Frankfurt
Stuttgart
Munich
Germany
Berlin
Leipzig
Austria
Vienna
Graz
Slovenia
Ljubljana
Zagreb
Croatia
Sarajevo
Bosnia and Herzegovina
Montenegro
Tirane
Albania
ALB.

Poland
Warsaw
Poznań
Wrocław
Czech Republic
Prague
Slovakia
Bratislava
Budapest
Hungary
Pécs
Slovenia
Ljubljana
Zagreb
Croatia
Sarajevo
Bosnia and Herzegovina
Montenegro
Tirane
Albania
ALB.

Ukraine
L'viv
Moldova
Chisinau
Romania
Cluj-Napoca
Bucharest
Constanța
Black Sea
Bulgaria
Sofia
Varna
Greece
Athens
Thessaloniki
Istanbul
Turkey

Portugal
Spain
Lisbon
Madrid
Valencia
Sevilla
Málaga
Balearic Islands
Sardinia
Corsica
Celtic Sea
Strait of Gibraltar
Ceuta (Spain)
Melilla

Italy
Rome
Naples
Florence
Genoa
Turin
Milan
Venice
Sardinia
Corsica
Vatican City

Latvia
Riga
Lithuania
Vilnius
Belarus
Minsk
Poland
Warsaw
Poznań
Wrocław
Czech Republic
Prague
Slovakia
Bratislava
Budapest
Hungary
Pécs
Slovenia
Ljubljana
Zagreb
Croatia
Sarajevo
Bosnia and Herzegovina
Montenegro
Tirane
Albania
ALB.

Ukraine
L'viv
Moldova
Chisinau
Romania
Cluj-Napoca
Bucharest
Constanța
Black Sea
Bulgaria
Sofia
Varna
Greece
Athens
Thessaloniki
Istanbul
Turkey
Greece
Athens
Thessaloniki
Istanbul
Turkey

POLAND

State territory:	312.575 km ²
Population:	38.136.000
Number of motor vehicles per 1000 residents	572

September 25, 2008 Poland joined
the International Energy Agency.

The share of liquid fuels in the energy market
amounts to about 24%.

Crude oil - 95% of supplies from Russia.

Liquid fuels – import - 36%, mainly from Germany.

FUEL INFRASTRUCTURE IN POLAND



LEGEND

- tank farms in Poland
- refineries
- crude oil pipelines
- product pipelines
- ⋯ product pipelines in plans
- ⋯ Odessa-Brody pipeline in plans

MATERIAL RESERVES AGENCY

- state legal person;
- established May 30, 1996;
- supervised by Minister of Economy.

MRA operates under:

- the Act of 16 February 2007 on stocks of crude oil, petroleum products, and natural gas, the principles of proceeding in circumstances of a threat to the fuel security of the State and disruption on the petroleum market;
- the Law of 30 May 1996 r. on State Reserves.

You can find the above mentioned Acts on MRA internet page:

www.arm.gov.pl

MRA's scope of operations:

- intervention stocks of crude oil and its products;
- fuel and material reserves indispensable in performing tasks in the interest of state defence and safety;
- medical products and medical articles;
- agricultural products (grain, meat, sugar etc.)

INTERVENTION STOCKS

```
graph TD; A[INTERVENTION STOCKS] --> B[Compulsory stocks]; A --> C[State stocks];
```

Compulsory stocks

Accumulated and maintained by enterprises at the level of 76 days.

Costs covered by enterprises of the petroleum sector.

State stocks

Accumulated and maintained by the Material Reserves Agency.

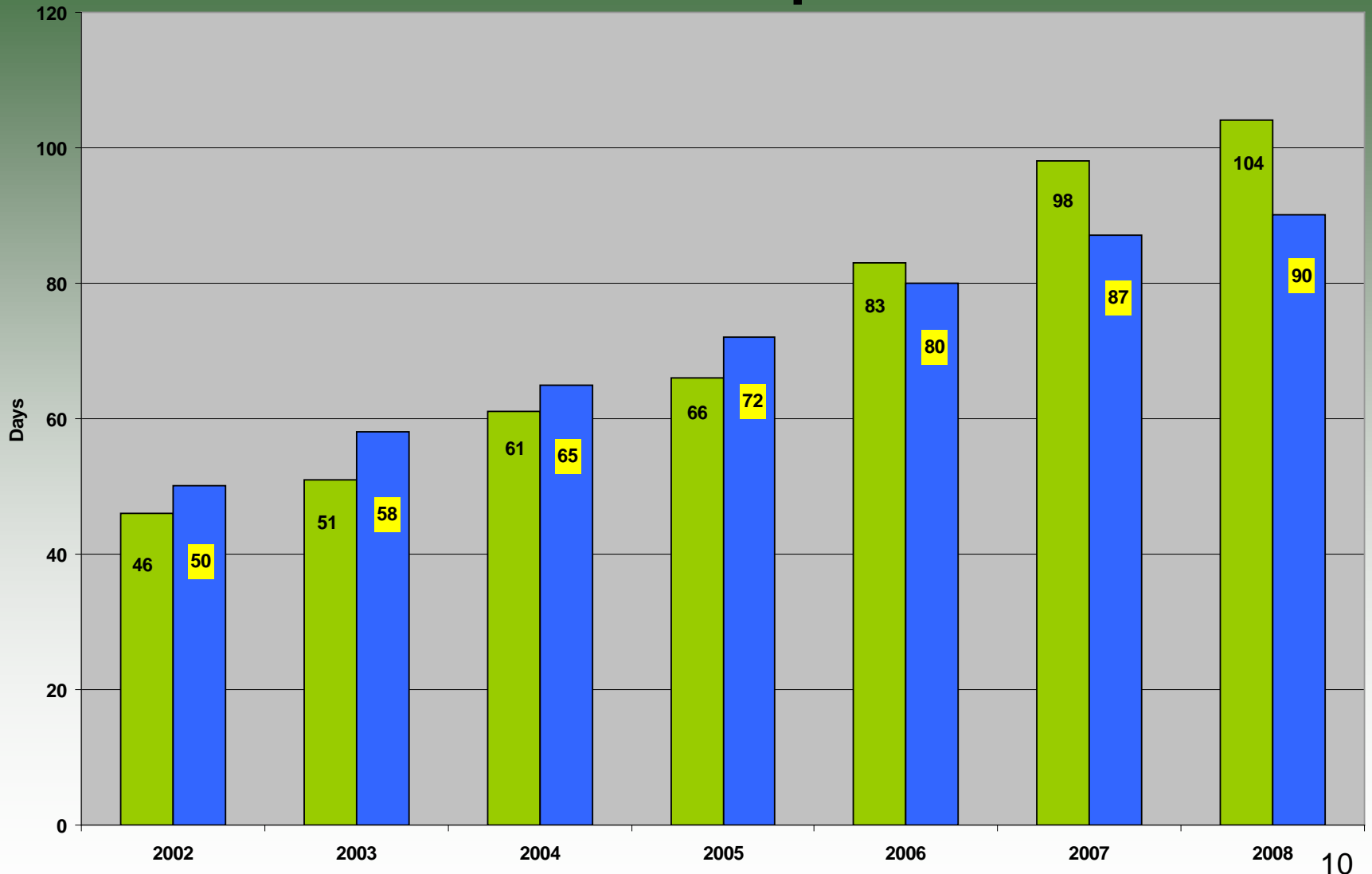
Level: not lower than 14 days.

Financed by the state budget.

Intervention Stocks

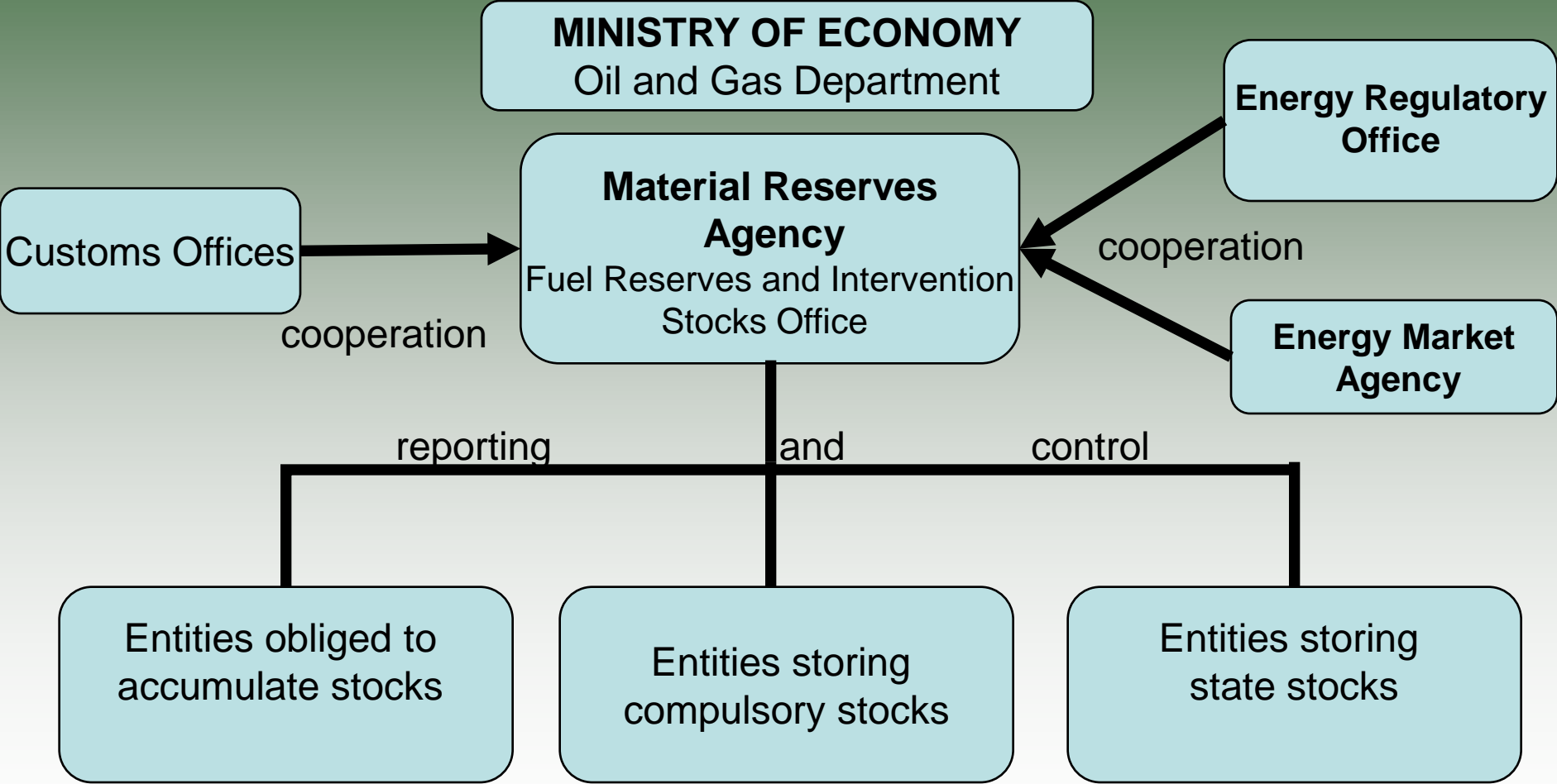
- **GASOLINES**
- **DIESEL OILS**
- **LEIGHT HEATING OILS**
- **HEAVY HEATING OILS**
- **CRUDE OIL**
- **LPG**

Process of accumulating 90 day stocks of crude oil and its products

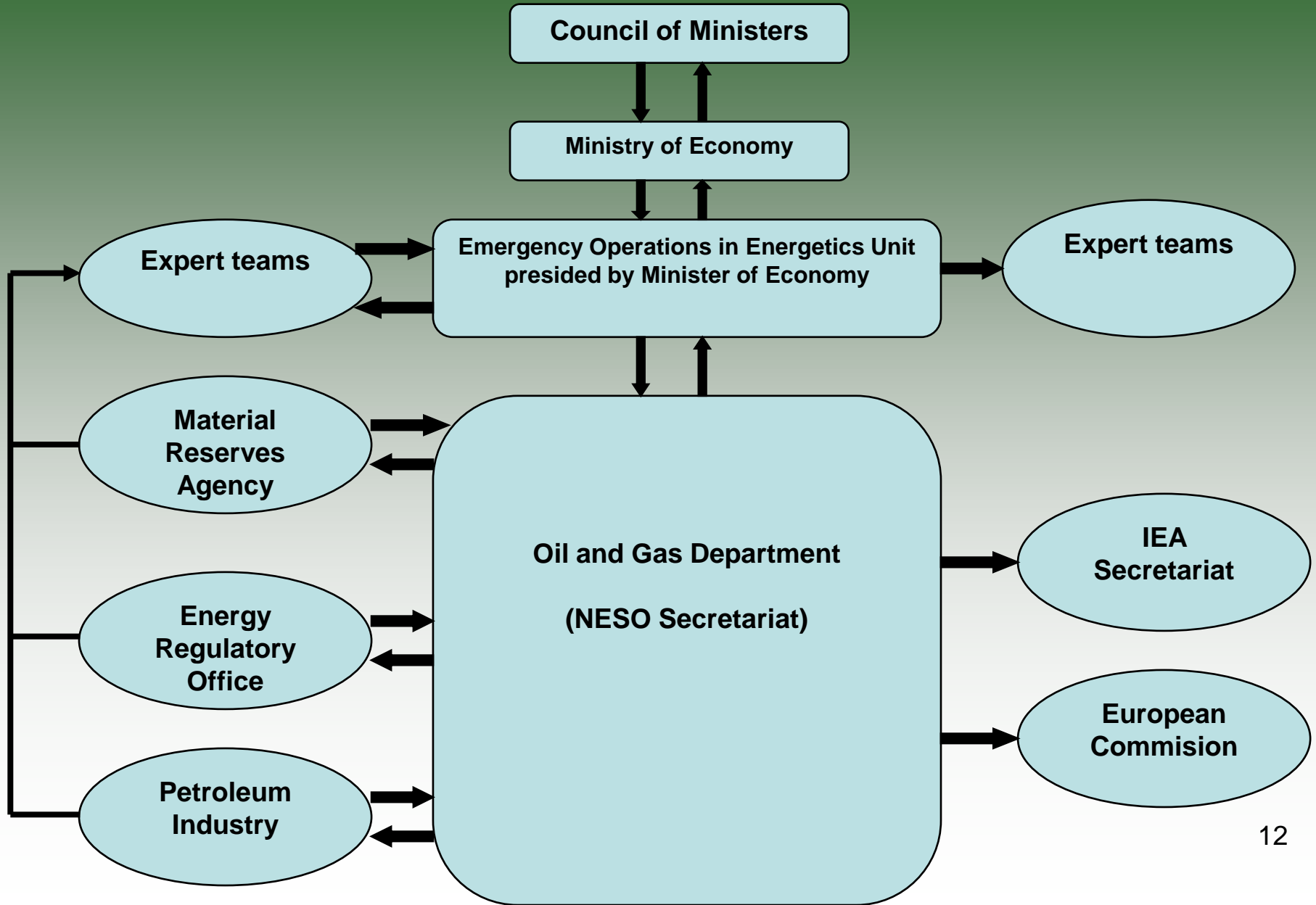


■ actual level of stocks calculated according to the method adopted by the UE
■ required level of stocks according to the Accession Treaty to the UE

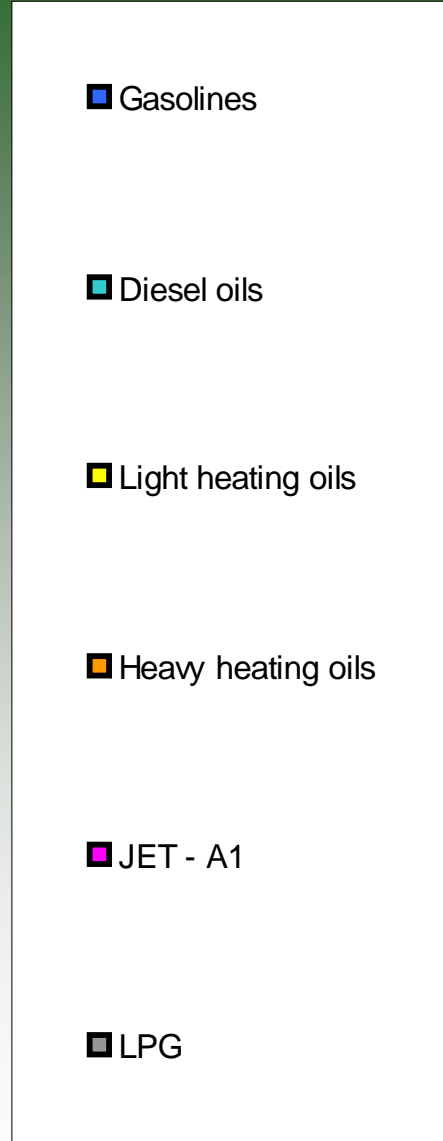
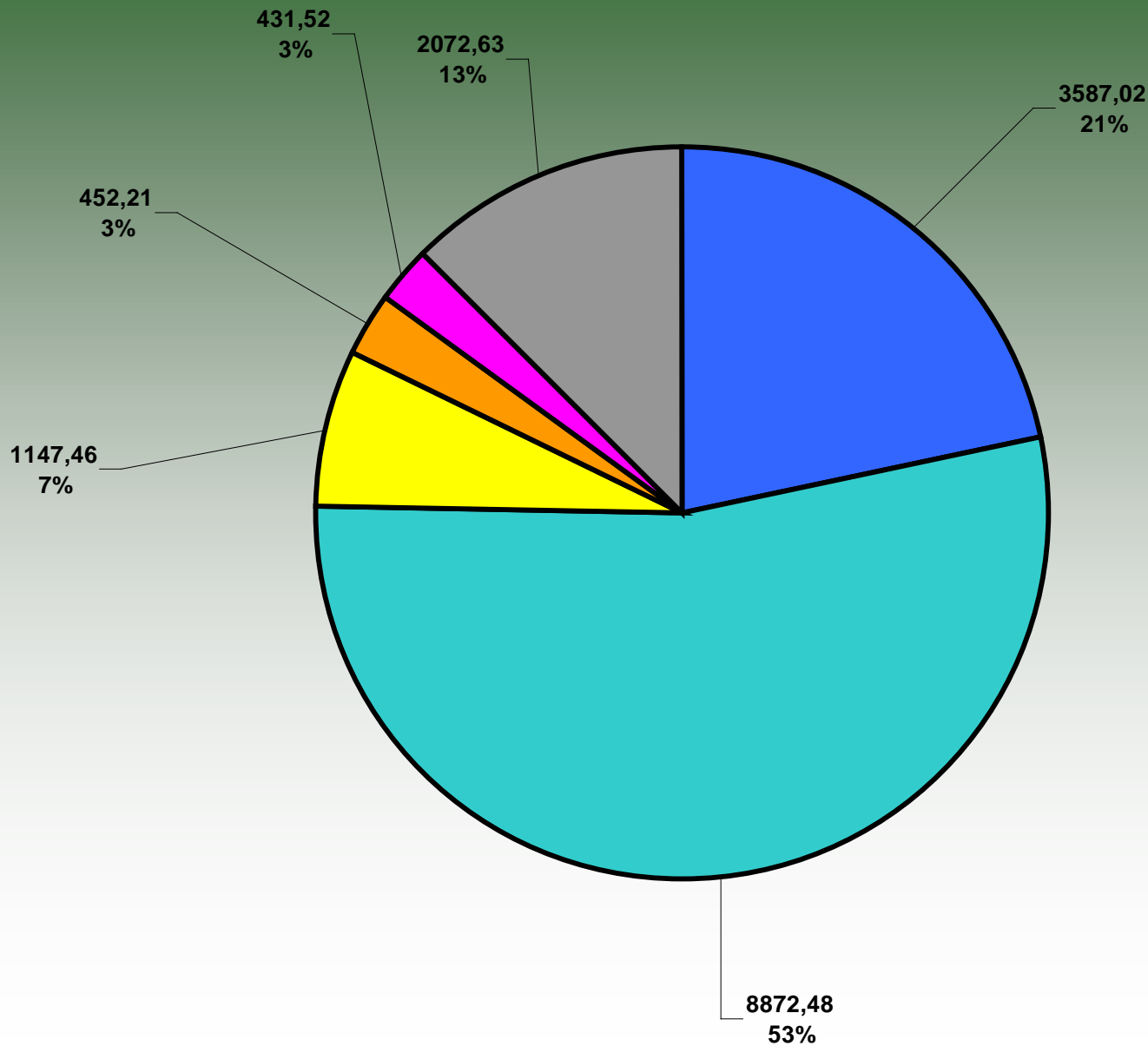
SUPERVISION SYSTEM



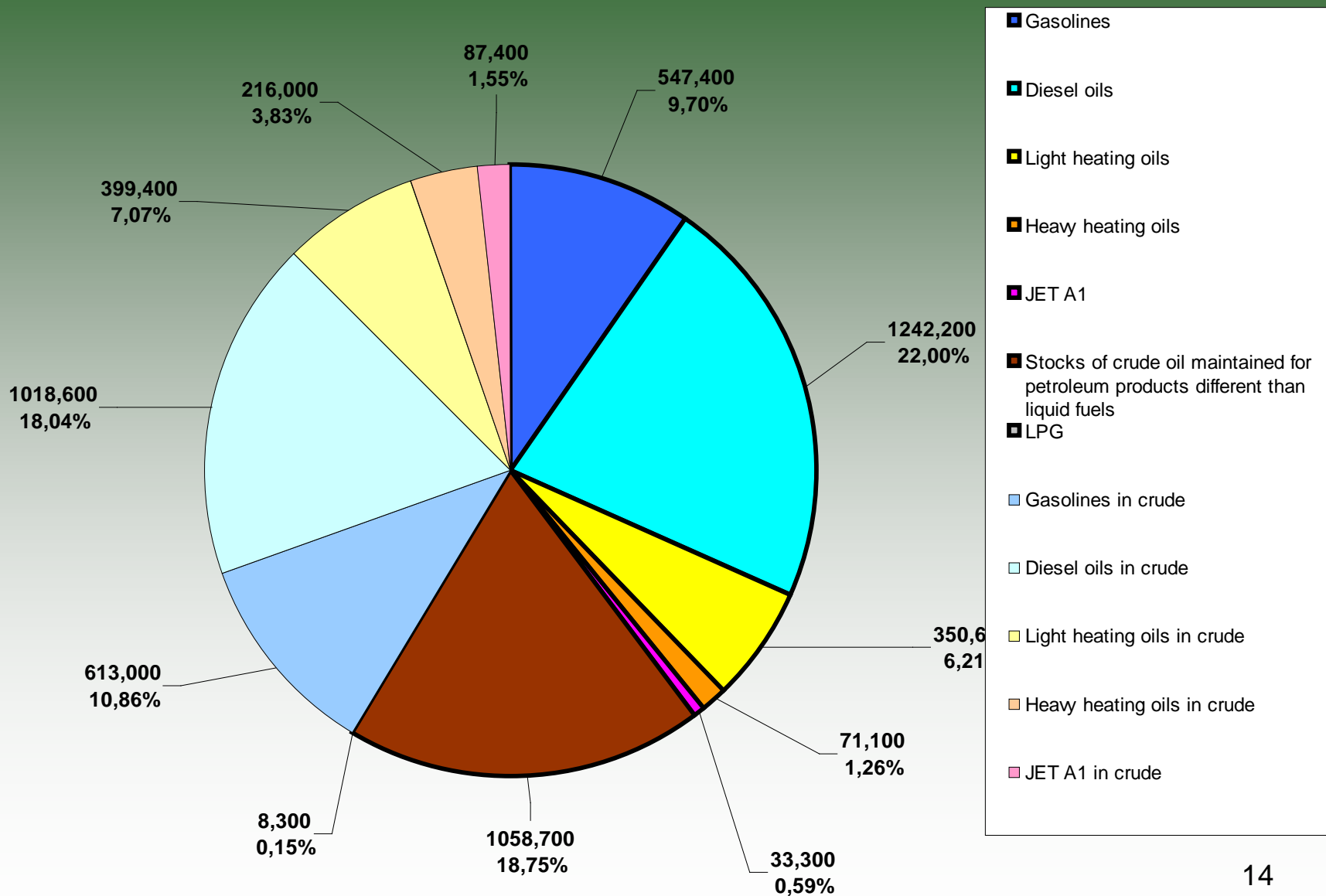
POLISH NESO STRUCTURE



LIQUID FUELS CONSUMPTION
(in k tones)



INTERVENTION STOCKS (in k tones)



Thank you for your attention